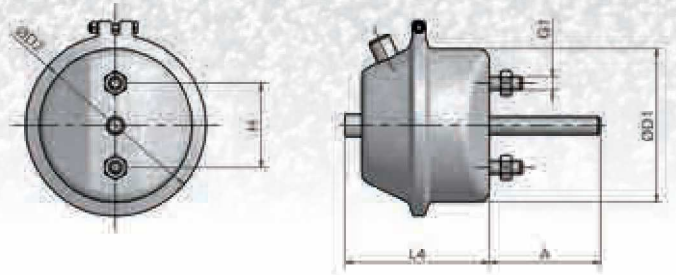


### CILINDRO DE FREIO PNEUMÁTICO (CUICA SIMPLES)

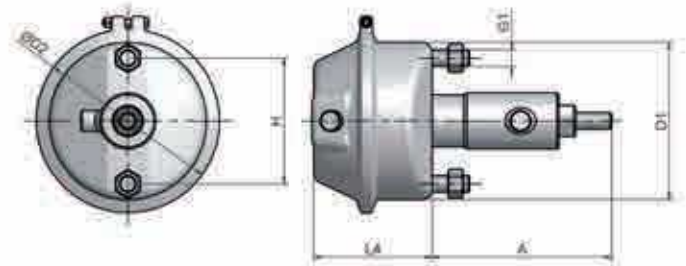
CILINDRO DE FRENO NEUMATICO DE MEMBRANA



								mm	Kg
		ØD1 (mm)	ØD2 (mm)	G1 (mm)	H (mm)	L4 (mm)	A (mm)		
<b>81401</b>	(9")	114	133	M12 x 1,75	76,2	110	185	<b>48</b>	1,82
<b>81402</b>	(12")	121	145	M12 x 1,75	76,2	120	200	<b>73</b>	2,11
<b>81403</b>	(16")	138	163	M12 x 1,75	76,2	130	200	<b>80</b>	2,66
<b>81404</b>	(20")	150	176	M16 x 1,5	120,7	130	200	<b>79</b>	3,07
<b>81405</b>	(24")	161	185	M16 x 1,5	120,7	130	200	<b>78</b>	3,7
<b>81406</b>	(30")	182	208	M16 x 1,5	120,7	140	200	<b>86</b>	4,72

### CILINDRO DE FREIO HIDRÁULICO-PNEUMÁTICO

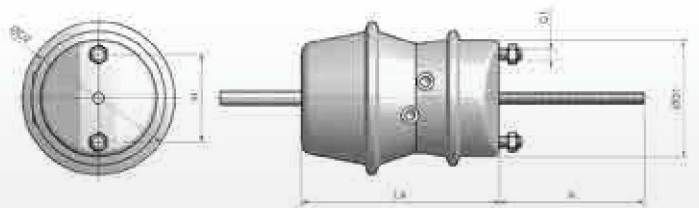
CILINDRO DE FRENO HIDRAULICO-NEUMATICO



								mm	Kg
		ØD1 (mm)	ØD2 (mm)	G1 (mm)	H (mm)	L4 (mm)	A (mm)		
<b>81501</b>	12" AIR	123	150	M12 x 1,75	76,2	110	266	<b>73</b>	3,5
	25mm OIL							<b>75</b>	
<b>81502</b>	20" AIR	151	180	M16 x 1,5	120	117	270	<b>78</b>	4,6
	30mm OIL							<b>75</b>	
<b>81503</b>	24" AIR	161	196	M16 x 1,5	120	117	275	<b>78</b>	5
	35mm OIL							<b>75</b>	

### CILINDRO DE FREIO PNEUMÁTICO COM MOLLA (CUICA DUPLA)

CILINDRO DE FRENO NEUMATICO CON MUELLE

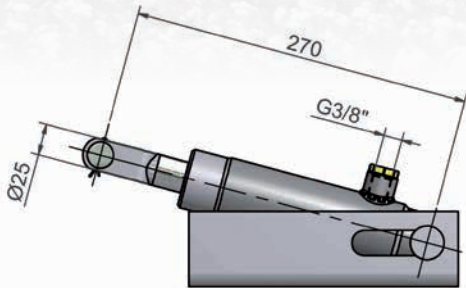


								mm	Kg
		ØD1 (mm)	ØD2 (mm)	G1 (mm)	H (mm)	L4 (mm)	A (mm)		
<b>81901</b>	(20"-30)	150	176	M16 x 1,5	120,7	270	200	76	8,7
<b>81902</b>	(24"-30)	185	210	M16 x 1,5	120,7	270	200	76	8,7
<b>81903</b>	(30"-30)	182	208	M16 x 1,5	120,7	270	200	76	9,7

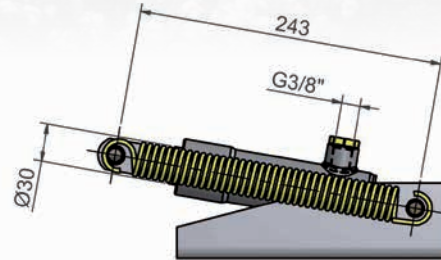


## CILINDRO PARA FREAGEM HIDRÁULICA

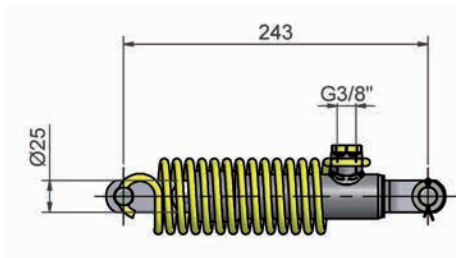
CILINDRO DE FRENO NEUMÁTICO CON MUELLE



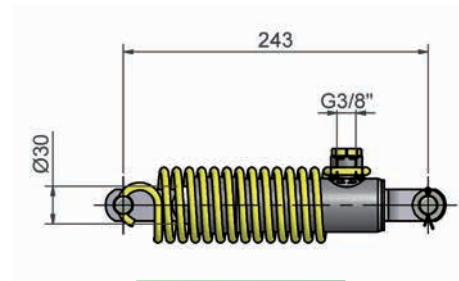
813107



813101



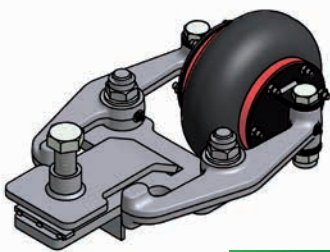
813104



813102

## ALINHAMENTO PNEUMÁTICO PARA AUTOESTERÇANTES

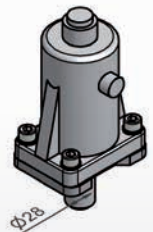
ALINEACIÓN NEUMÁTICA PARA AUTODIRECCIONALES



81602

## BLOQUEIO PNEUMÁTICO PARA AUTOESTERÇANTES

BLOQUE NEUMÁTICO PARA AUTODIRECCIONALES



81D27

## AMORTECEDOR AUTO CENTRANTE

AMORTIGUADOR AUTOCENTRANTE



821A401